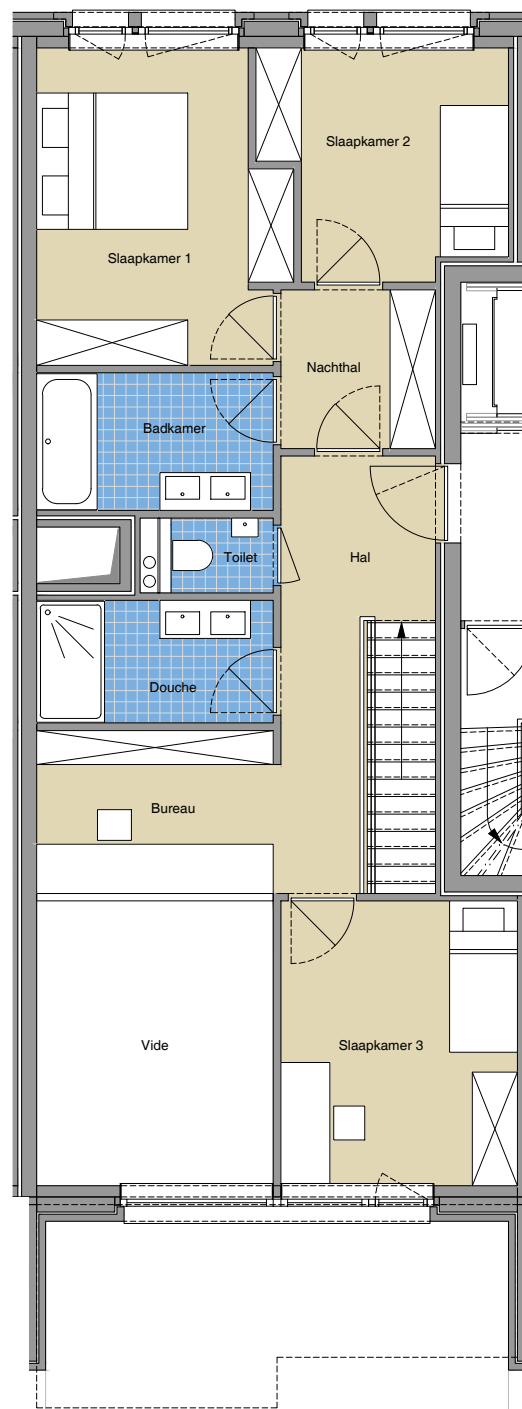
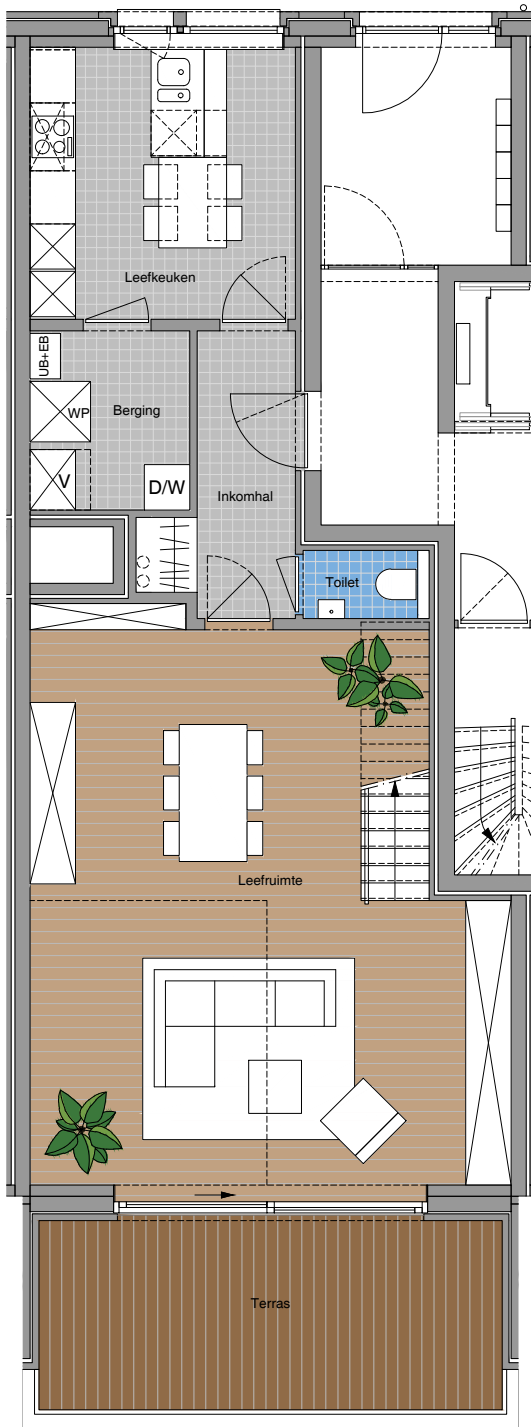
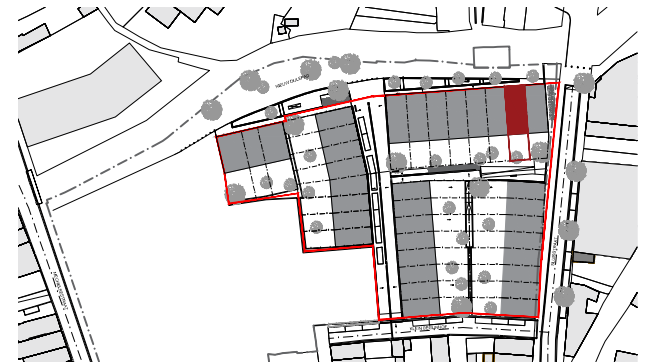
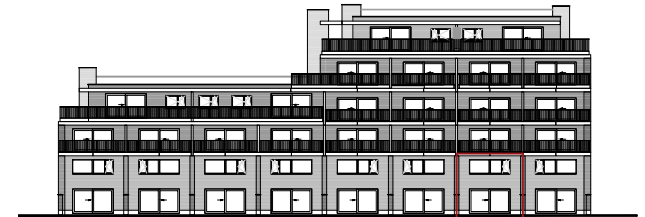


SLUISMOLEN

04-03-2021

DUP B

Bruto oppervlakte duplex : 80,84 m² + 85,70 m²



NETTO OPPERVLAKTES

Gelijkvloerse verdieping

Leefruimte	44,16 m ²
Leefkeuken	12,64 m ²
Terras	15,30 m ²

Verdieping 1

Slaapkamer 1	12,99 m ²
Slaapkamer 2	9,07 m ²
Slaapkamer 3	11,78 m ²



0m 1m 2m